

# DOW CORNING®

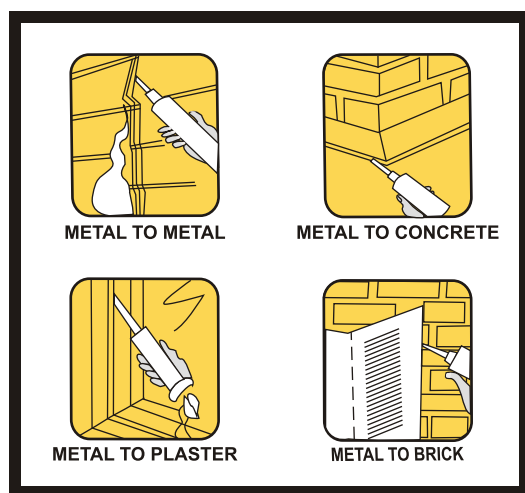
## Multiseal Silicone Sealant

DOW CORNING

### PRODUCT DATA SHEET



**100% SILICONE**



### DESCRIPTION

**Dow Corning** Multiseal Silicone Sealant is a one-part neutral cure silicone material that readily extrudes in any weather and quickly cures to a tough rubbery solid when exposed to moisture in the air.

Important features include:

- Ease of use-one-part, no mixing required.
- Excellent resistance to weathering, vibration, moisture, ozone and extreme temperatures.
- Long-life reliability - cured sealant stays rubbery from -60 to 200°C without tearing, cracking, drying out or becoming brittle.
- All temperature gunnability - can be applied in any season.

- Can be used with most common building materials.
- Wide choice of colors - standard colors include translucent, black and white.

**Dow Corning** Multiseal Silicone Sealant will not flow under its own weight. It can therefore be applied overhead or on vertical joints and surfaces without slumping, sagging or running out.

**Dow Corning** Multiseal Silicone Sealant can be used for all interior and exterior sealing requirements involving sheet steel, aluminium roofing, flashing, guttering and rainwater accessories, as well as ducting.

**Dow Corning** Multiseal Silicone Sealant provides an excellent anticorrosion barrier between dissimilar metals such as aluminium and steel where electrolytic corrosion can be a severe problem.

### SEALANT APPLICATION DIRECTIONS:

1. Surfaces must be clean, dry, sound and devoid of grit, oil, grease and detergents.
2. Mask adjacent surfaces for neat application.
3. Cut tip of cartridge. Cut nozzle to desired size at 45° angle, attach to cartridge. Place in caulking gun.



4. Apply sealant in continuous, steady flow. Push sealant ahead of nozzle contacting both sides of joint so it is completely filled.
5. Smooth sealant surface immediately after application before skin forms. Use spatula dipped in mild detergent. Remove masking tape before sealant skins.
6. Excess uncured sealant should be removed immediately with clean cloth dampened in mineral turpentine.

7. When sealing a metal lap joint, apply sealant to one surface in a continuous bead through the line of intended fasteners and fasten immediately, if no fasteners are to be used ensure sufficient sealant is used and joint supported while sealant cures.

### Dow Corning Multiseal Silicone Sealant

Type	One-part silicone rubber.
Cure	Neutral cure at room temperature upon Exposure to moisture in the air.
Special Properties	No mixing; ready to use as supplied; long life reliability.
Primary Uses	Sealant provides an excellent anti-corrosion barrier between dissimilar metals. Recommended for sealing galvanised sheet Metal products.

### TYPICAL PROPERTIES

(These values are not intended for use in preparing specifications).

#### As Supplied

Colors	Translucent, black, white
Flow Sag or Slump	Nil
Skin Over Time, Minutes	10
Working Time Minutes	15
Cure Time at 25°C, Days	1-2

#### As Cured-After 7 days at 25°C and 50% RH

Durometer Hardness, Shore A Points	23
Ultimate Tensile Strength, MPa	1.4
Temperature Stability, °C	-60 to 200
Movement Capability, Percent	± 25%

Where an architectural grade silicone sealant is required you are advised to consult Dow Corning.

### USAGE RATE TABLE

Approximate Metres per cartridge of Dow Corning Silicone Sealant for various joint sizes.

Width	mm	1.5	3	6	9	13	16	19	25
Depth in mm	1.5	130	65	32	22	15	12	10	8
	3		32	16	11	7	6	5	4
	5			9.7	6.8	4.6	3.7	3	2.3
	6			7.7	5.4	3.8	3	2.6	2
	9				3.6	2.5	2	1.75	1.3
	13				2.5	1.7	1.4	1.2	.09

### WARNING

On Direct Contact, uncured Sealants irritate eyes.

Immediately flush eyes with plenty of water, call Doctor, Avoid repeated or prolonged skin contact. Do not use Unisil Bathroom and Tile Sealant or Dow Corning Multi Seal Sealant in areas where food contact is likely or on drinking water lines. On complete curing Dow Corning Glass Sealant can be used for food contact applications.

### KEEP OUT OF REACH OF CHILDREN

#### Storage / Packaging

Store below 35°C in a dry shaded place.

Available in 300 gm cartridges.

#### WARRANTY INFORMATION – PLEASE READ CAREFULLY

The information contained herein is offered in good faith and is believed to be accurate. However because conditions and methods of use of our products are beyond our control, this information should not be used in substitution for customer's tests to ensure that Dow Corning's products are safe and effective, and fully satisfactory for the intended end use. Dow Corning's sole warranty is that the product will meet the Dow Corning sales specifications in effect at the time of shipment. Your exclusive remedy for breach of such warranty is limited to refund or purchase price or replacement of any such product shown to be other than as warranted. Dow Corning specifically disclaims any other express or implied warranty of fitness for a particular purpose or merchantability. Unless Dow Corning provides you with a specific duly signed endorsement of fitness for use, Dow Corning disclaims liability for any incidental or consequential damages. Suggestions of uses should not be taken as inducements to infringe any particular patent.

Dow Corning® is a registered trademark of Dow Corning Corporation.

WE HELP YOU INVENT THE FUTURE.™ is a trademark of Dow Corning Corporation.

© Dow Corning Corporation. All rights reserved.

Printed in India.

**DOW CORNING**

**WE HELP YOU INVENT  
THE FUTURE.™**

[www.dowcorning.com](http://www.dowcorning.com)

### Dow Corning India Pvt. Ltd.

Wockhardt Towers, East Wing, Level 2  
Bandra-Kurla Complex, Bandra-East  
Mumbai - 400 051, India  
Fax : +91 22 6694 6848